

a as architecture



COMPETITION, ITALY, LAD, NEWS

# SPIGNON LIGHTHOUSE BY LAD

| FEBRUARY 8, 2018 | MARCO RINALDI

Tweet

Like 29

Share



# Spignon Lighthouse Project

from LAD

01:07

Spignon is a lighthouse located on a small island in the Venice lagoon, close to the “Bocca di Porto”, the opening that separates the Lido island from Pellestrina island. The lighthouse is owned by the State and since it has been abandoned and partially collapsed, the Italian State Property Agency, called Demanio, has decided to grant it to a private through a call called “Valore Paese Fari”.



Image © LAD

Our project contemplates the rebuilding of the collapsed volume and the restoration of the existing tower. The new building hosts a structure with a flexible plan that can be used both as a dwelling and as an exhibition space. The main concepts are two: the first concerns the iconography and therefore the external space, while the second concerns the internal space.



Image © LAD

From an iconographic point of view, this project tries to relate the proportions of the typical facades of the Venetian palaces to the construction systems of big ships. Looking at the building from the front you can see the same alternation of plains and voids of the Ca 'd'Oro or the Palazzo Ducale, while observing the building from three-quarters, its image reminds the construction of a hull.





Image © LAD

The second feature consists in a flexible plan, adaptable to different uses. The internal moving walls system allow to use both space both as public and private: when the walls separate the rooms, the building is used for residential or touristic purposes, otherwise, when the moving walls flow inside the technical closets, the space becomes large and unitary and can therefore host an exhibition activity.



Image © LAD

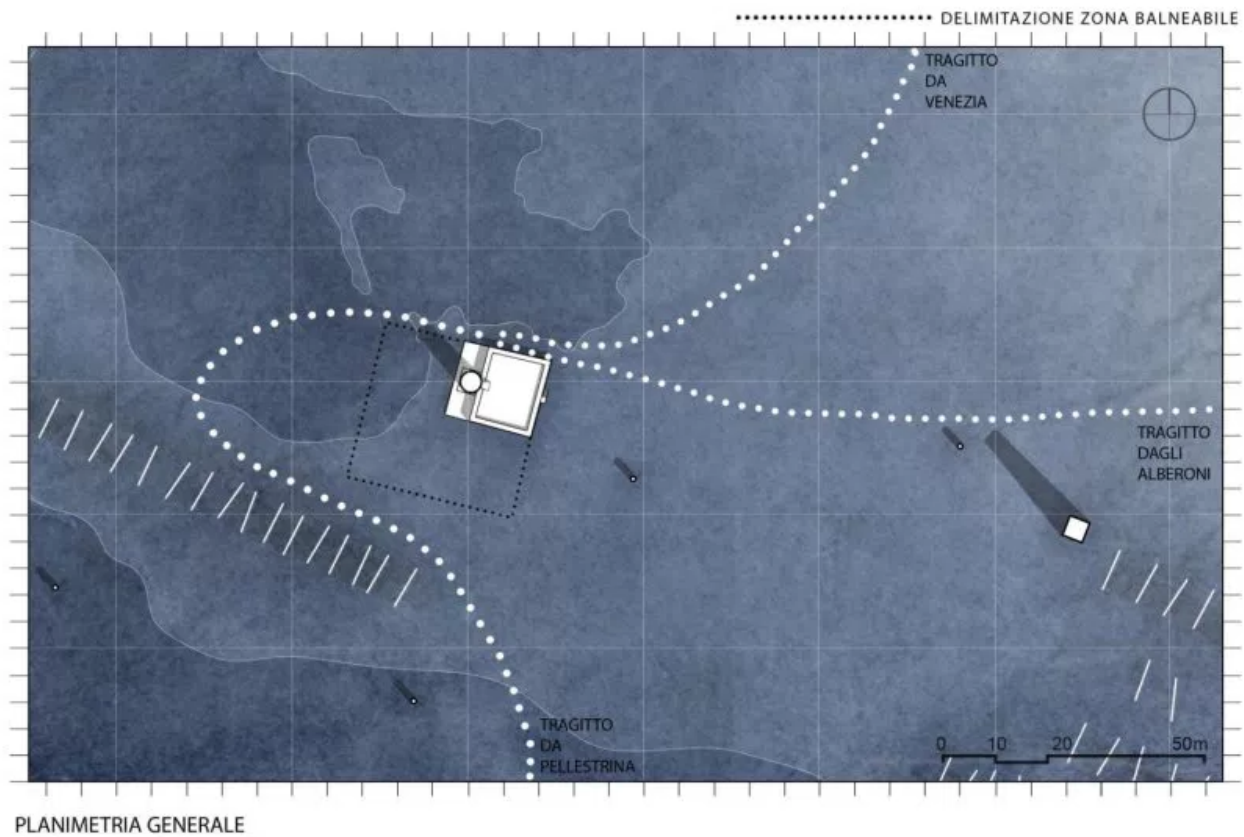
This work obtained the highest score, and was therefore considered by the commission the best in terms of technical and qualitative aspects; however this was not enough: The rules of the competition provided that the final score was the sum deriving from the quality of the technical offer and the economic offer related to the rent proposed by the participant to the Agency. The sum of these two scores determined that our proposal would qualify second. Source by LAD.



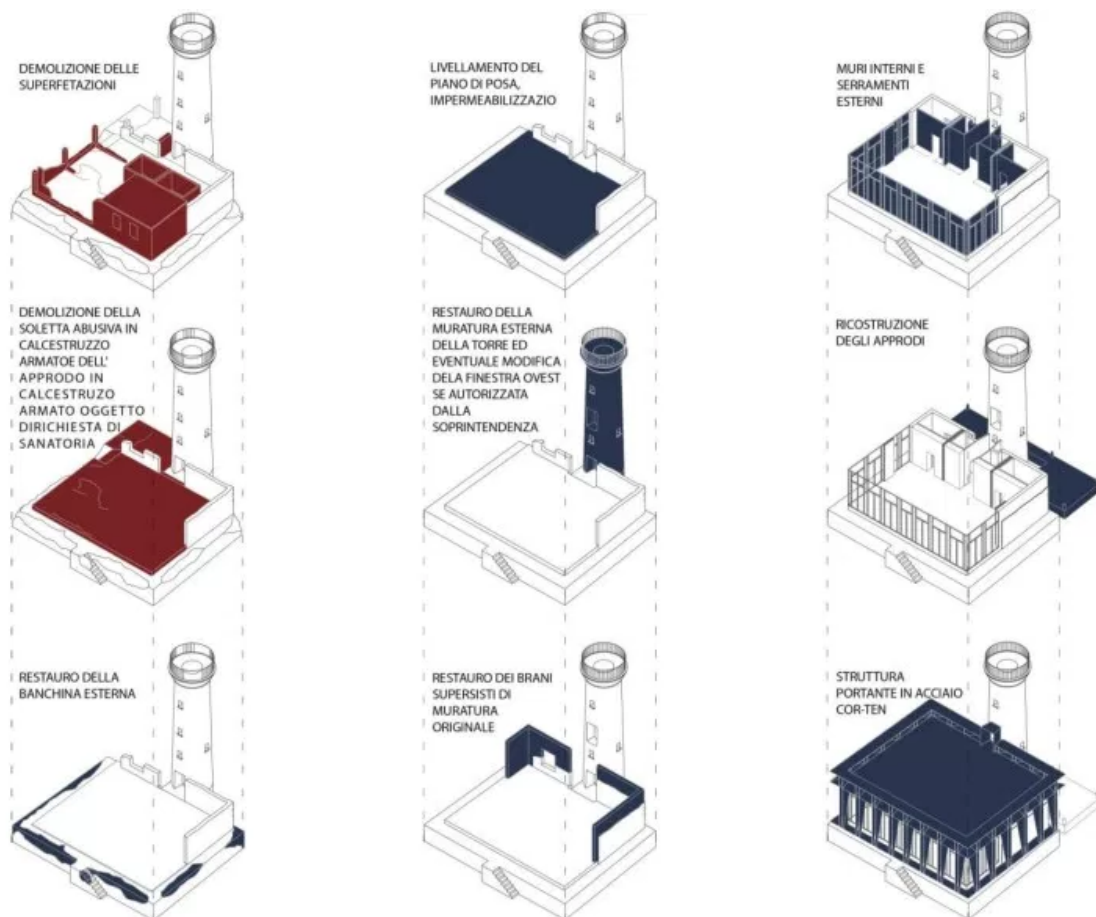
Image © LAD

- **Location:** Spignon, Venice, [Italy](#)
- **Architect:** [LAD](#)
- **Architect in charge:** Francesco Napolitano, Simone Lanaro
- **Project Team:** Lorenzo Pericoli, Chiara Intreccialagli, Serena Bruno Gallo, Alessandro Barile, Laura Fernandez Moreno
- **Consultant:** Arch. Alfonso Tizzano
- **Client:** Simerg S.R.L.
- **Status:** Competition – 2th Place
- **Program:** 130 m2
- **Year:** 2016
- **Images:** Courtesy of LAD





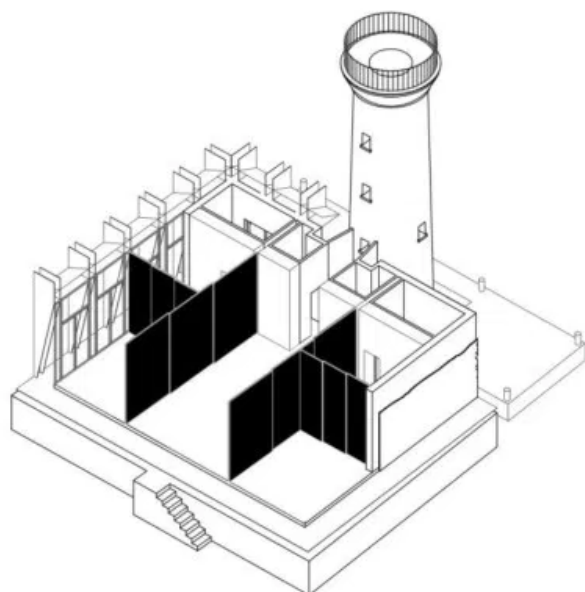
## Site Plan



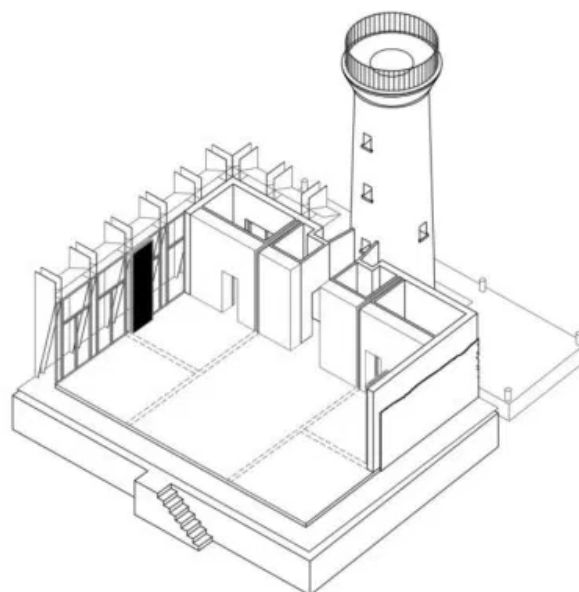
## Diagram



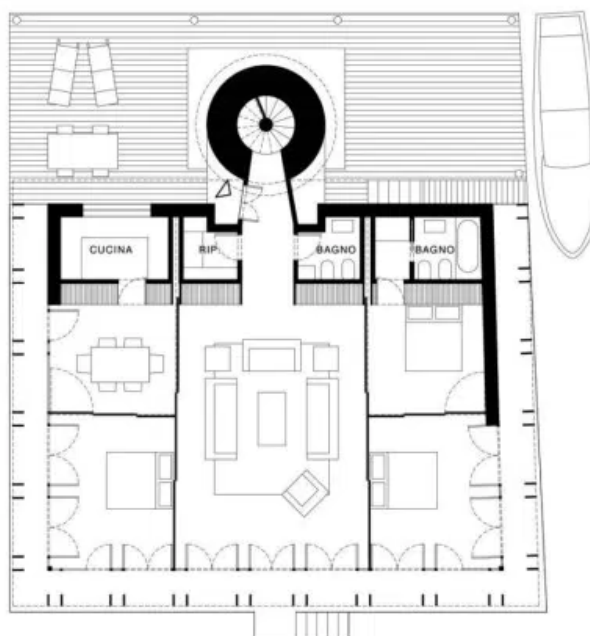
1 - SISTEMA DEI PANNELLI MOBILI APERTI  
UTILIZZO RESIDENZIALE DELLA STRUTTURA



2 - SISTEMA DEI PANNELLI MOBILI CHIUSI  
UTILIZZO PUBBLICO DELLA STRUTTURA

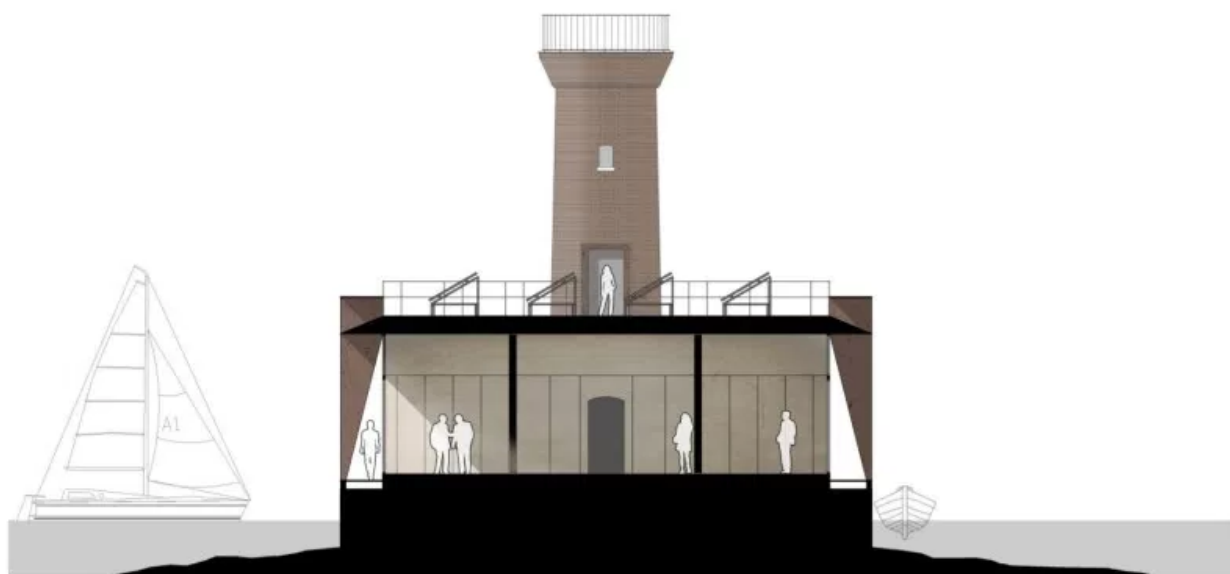


Scheme



PIANTA DEL PIANO TERRA POST OPERAM

Plan



SEZIONE TRASVERSALE

0 1 2 5 m

## Section



VISTA FRONTALE DELL' EDIFICIO DI PROGETTO



PALAZZO DUCALE  
PARTICOLARE DELL' ORDINE  
ARCHITETTONICO



CA' D'ORO  
PARTICOLARE DELL' ORDINE  
ARCHITETTONICO



VISTA DI TRE QUARTI DELL' EDIFICIO DI PROGETTO

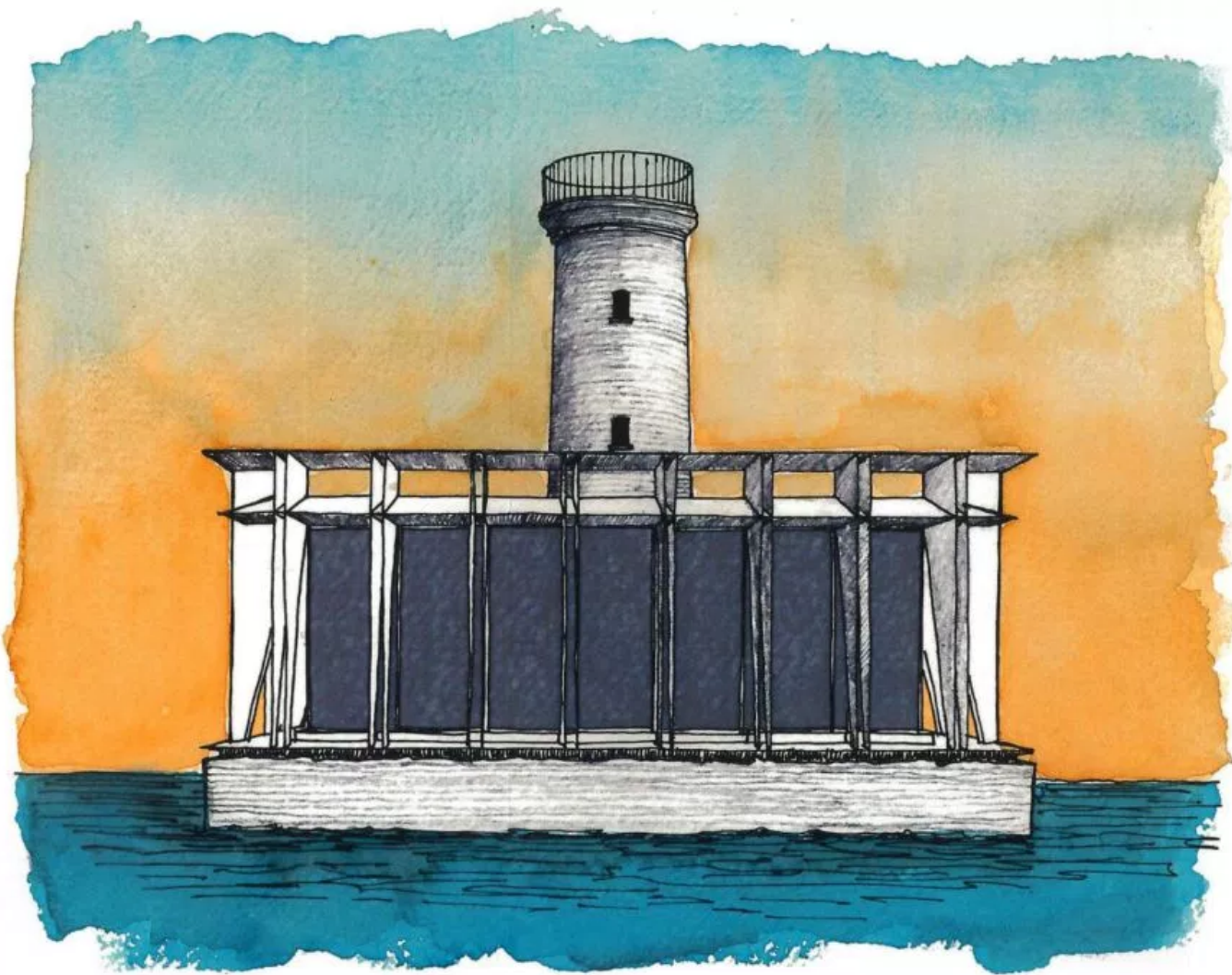


CHIGLIA DI NAVE  
FOTO DI CANTIERE



CHIGLIA DI NAVE  
FOTO DI CANTIERE

## Concept



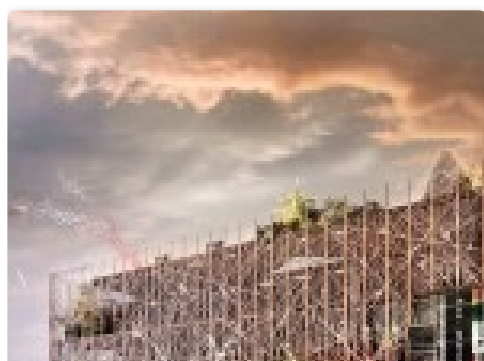
Watercolor

Article by [Marco Rinaldi](#)

with permalink:

<http://aasarchitecture.com/2018/02/spignon-lighthouse-lad.html>

## Related Posts





ITALIAN PAVILION EXPO  
2015 BY NEMESI



CONTAINER SPORTS  
CENTER BY LAD  
LABORATORIO DI  
ARCHITETTURA E  
DESIGN



NEW SQUARE FOR  
STABBIA BY OAM  
ARCHITECTURE



ACME WINS SAB DESIGN  
COMPETITION



SUPREME SPORT  
VILLAGE BY LAD



LAW-COURT OFFICES BY  
C+S ARCHITECTS