

Fontanile, Italy

Architect:
LAD

Designer:
Matteo Bianchi

Location:
Tarquinia, Italy

Year:
2015

Type of pool:
private, outdoor

Size:
21.75 sqm

Length x width:
7.5 x 2.9 m

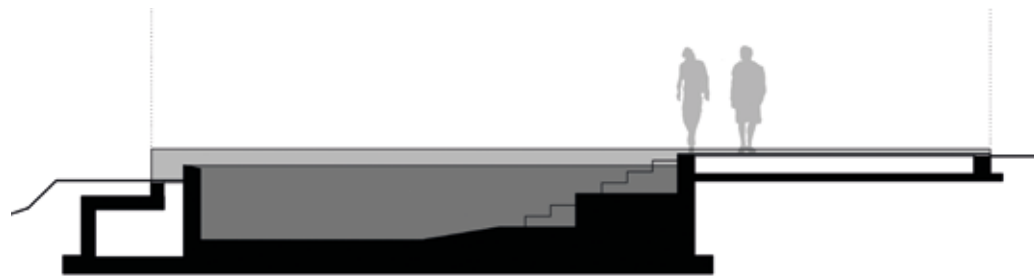
Depth:
1.2 m

Photos:
LAD

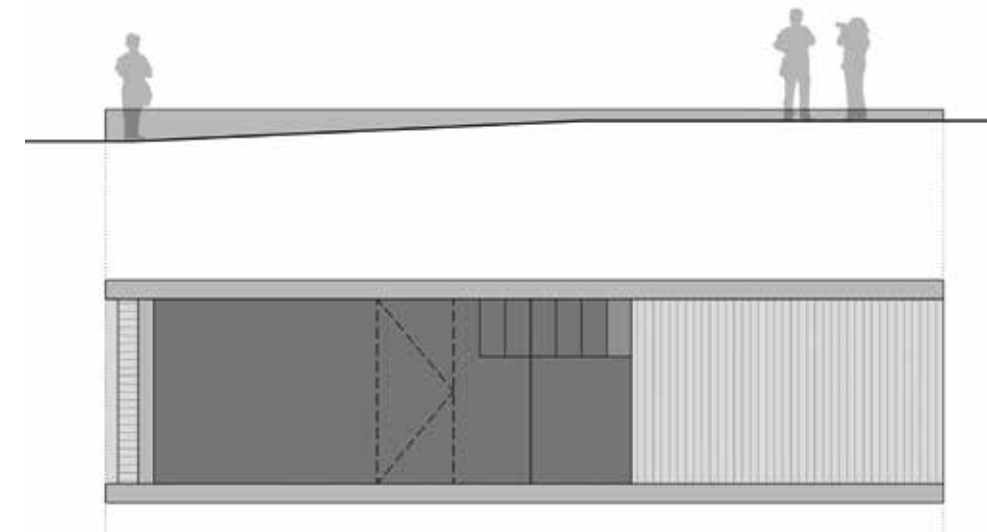


The Fontanile project is located in the garden of a villa at the bottom of the old city walls. Like the *Villae Minimae*, Fontanile is designed to be used as a site for observing the landscape: two stone walls frame the surrounding nature, isolating a single point of view, like an optical device. These elements link together three open air spaces: the landscape, the fountain, and the deck.

The shape and the proportions of this work are reminiscent of the old country fountains of the surroundings. The project aims to create a space in harmony with nature and artifice, with the countryside and the city, allowing contemplation of the landscape.



Detail of the small wooden terrace, side view and plan, view from the swimming pool of the landscape



Previous pages: view of the garden from the swimming pool, main view of the pool, this page: section, view from the small pool terrace