

Olgiata Sporting Club / LAD



© Francesco Napolitano

Architects: [LAD](#)

Location: **Via Antonio Conti, 00123 Rome, Italy**

Architect In Charge: **Francesco Napolitano**

Design Team: **Michelangelo Sabuzi Giuliani, Maria Carla Lini, Marcello Amalfitano**

Interior Design: **Simone Lanaro**

Area: **7500.0 sqm**

Year: **2010**

Photographs: **Francesco Napolitano, Cornelia Suhan**



Civil Engineers: **Teico**

Wooden Structures: **Holzbau**

Roof: **Rheinzink**

Client: **Olgiata Verde s.r.l.**

Program: **7.500 M² Indoor (Gyms + Swimming Pool) + 80000 M² Outdoor**

Sport Manager: **Olgiata 20.12 Sport Club**

From the architect. The Olgiata Sporting Club is located inside the woods of a garden city at the border of Rome, Italy

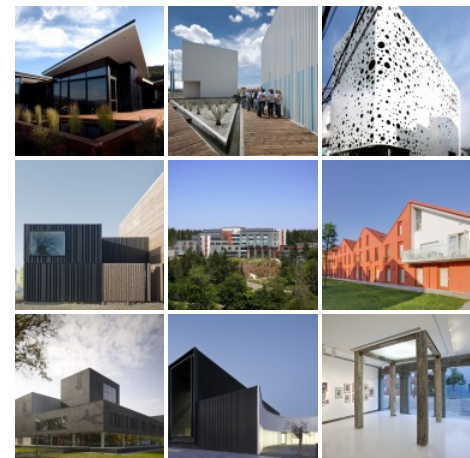
The building is made up of three different pavilions connected to each other. The central one is the administrative center and contains the entrance, where the main staircase and the connections are. Through it the visitor can access the locker rooms at the lower level and then the two pavilions.

South pavilion contains gyms, North pavilion contains swimming pools. The paths to reach the different areas are strictly separated.

Outdoor space accommodates football fields, tennis courts and a beach-volley court.



SELECTED BUILDINGS



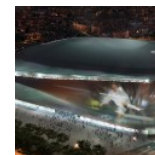
[MORE SELECTED BUILDINGS >](#)

MOST VISITED OF THE WEEK



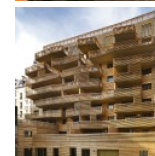
30 Jan 2014

Vertical Glass House / Atelier FCJZ



31 Jan 2014

gmp Wins Bid to Redevelop Real Madrid's Bernabeu Stadium



28 Jan 2014

Grenelle, 35 Logements / Peripheriques Architectes

30 Jan 2014



Winners of the 2014
Building of the Year
Awards

26 Jan 2014

New Wave Architecture
Designs Rock Gym for
Polur



© Cornelia Suhan



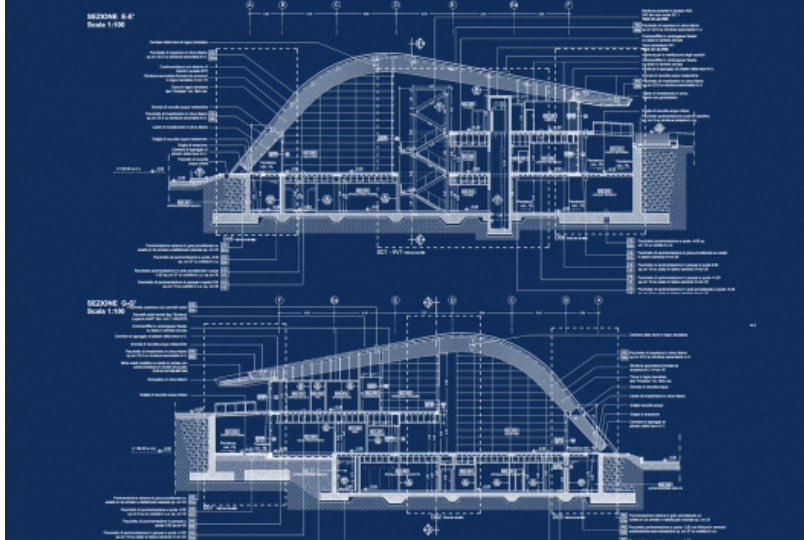
© Francesco Napolitano



© Cornelia Suhan

The boomerang shaped beams are made up of glulam, designed and produced by Holzbau in Italy.

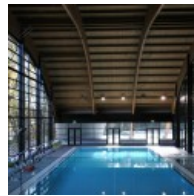
The roof is in zink-titanium, produced by Rheinzink.



Section Detail



© Francesco Napolitano



© Francesco Napolitano



© Comelia Suhan



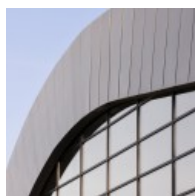
© Comelia Suhan



© Comelia Suhan



© Comelia Suhan



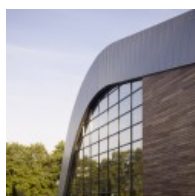
© Comelia Suhan



© Comelia Suhan



© Comelia Suhan



© Comelia Suhan



© Comelia Suhan



© Comelia Suhan



© Comelia Suhan



© Comelia Suhan



© Francesco Napolitano



© Francesco Napolitano



© Francesco Napolitano



© Francesco Napolitano



© Francesco Napolitano



© Comelia Suhan



Master Plan



24 JAN 2014
Selected Works Sports
Architecture Italy LAD Rome

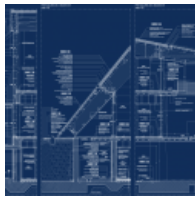


- 28
- Tweet
- 2
- +1

36



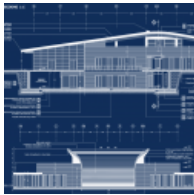
Elevation



Section Detail



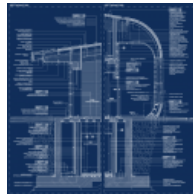
Section Detail



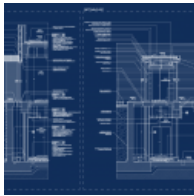
Section, Elevation



Section Detail



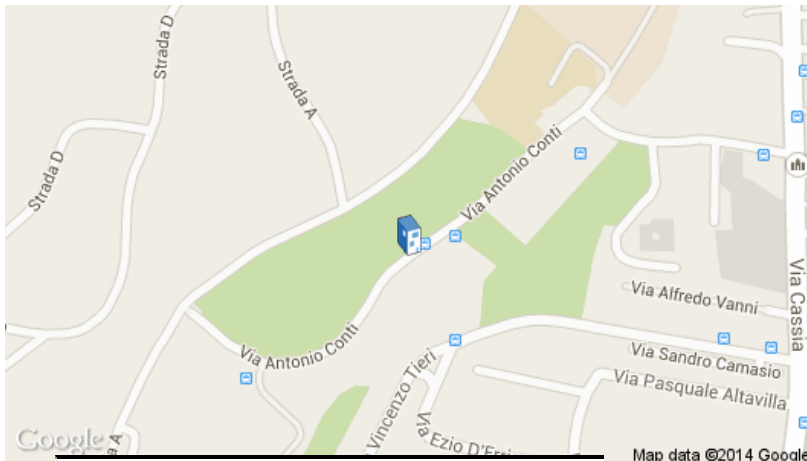
Detail



Detail

Fatti trovare
con la
pubblicità
Google.

Ricevi un
credito di 75€



You may also like:

Map data ©2014 Google
t not exact address.

Cite:

"Olgia
p=469



**Residential and Tourist
Facilities in Milan / aa-ls**

tp://www
aily.com/?



Share your thoughts

If you want your own avatar and keep track of your discussions with the community, [sign up for My ArchDaily!](#) »

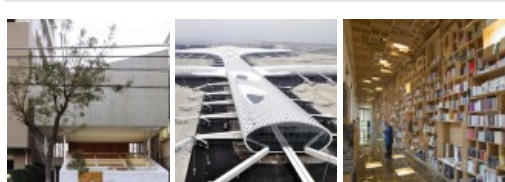
(required)

(required, will not be published)

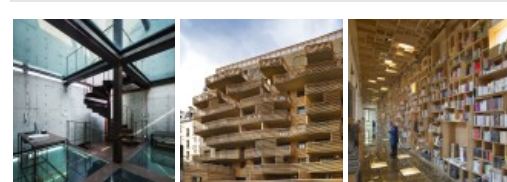
Notify me of followup comments via e-mail

OUR PARTNERS

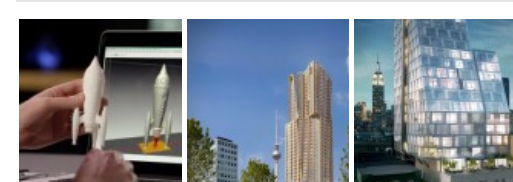
RECENT PROJECTS



MOST BOOKMARKED



RECENT NEWS



THANKS FOR VISITING

© ArchDaily 2008-2014. All rights reserved.
All images are © each office/photographer mentioned.

FOLLOW US IN

CONTACT INFORMATION

- [Contact](#)
- [Advertising](#)
- [Terms of Use](#)
- [Privacy Policy](#)